

Patient NAME Ms Jane Doe	DATE OF BIRTH 1992-Jun-12	DISEASE Breast	STAGE II	Physician NAME Administrator
SPECIMEN 20ml Blood	VIAL IDs 1			

REPORT SUMMARY

CTCs COUNT: Isolated 3.3 cells/7.5 ml , SD +/- 0.3 cells

NATURAL SUBSTANCES SENSITIVITY

Class I

Cytotoxic Agents

Artecin, Amygdalin-(B17), Agaricus
Blazei Murill, Artesunate, Ascorbic acid,
C-statin, Mitochondrien formular,
Onkobel Pro, Oxaloacetate (Cronaxal),
Super Artemisinin

Class II

Immunostimulants / Immunomodulators

Class III

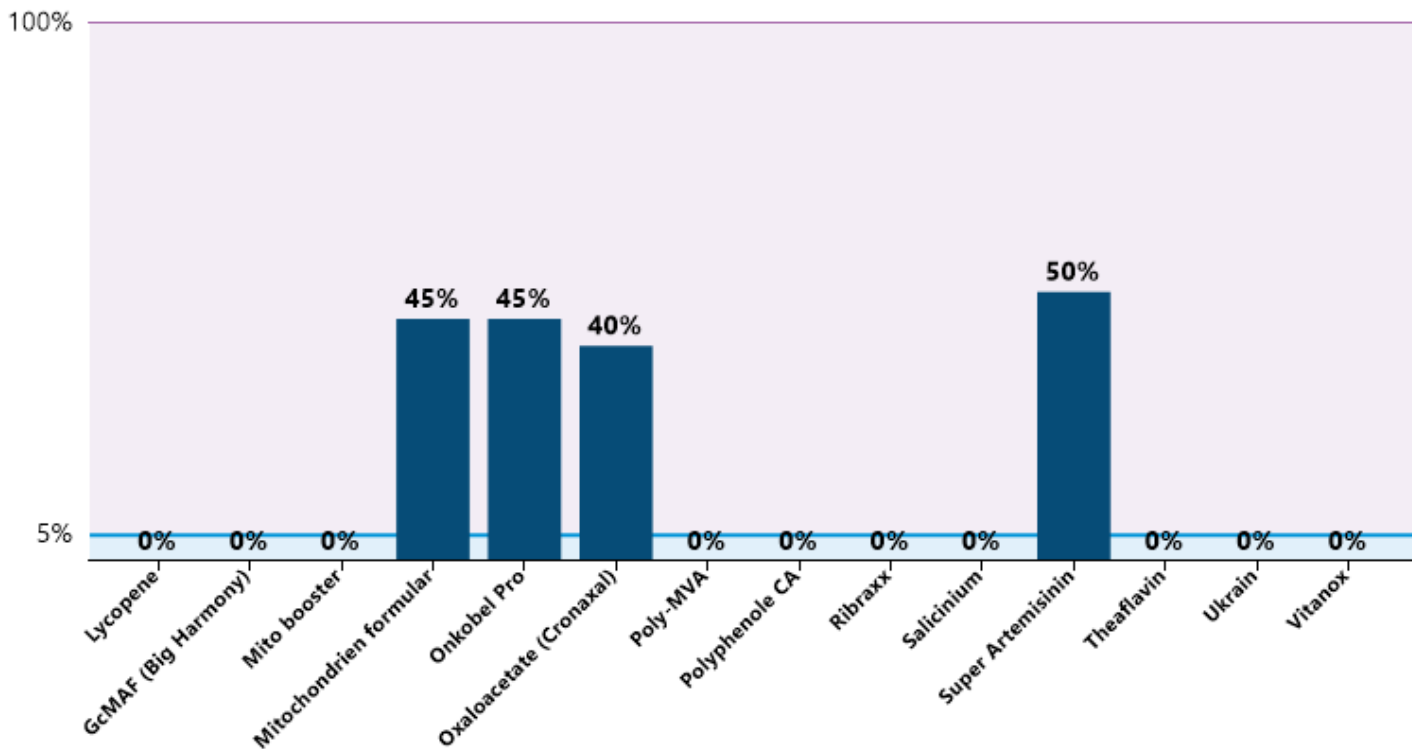
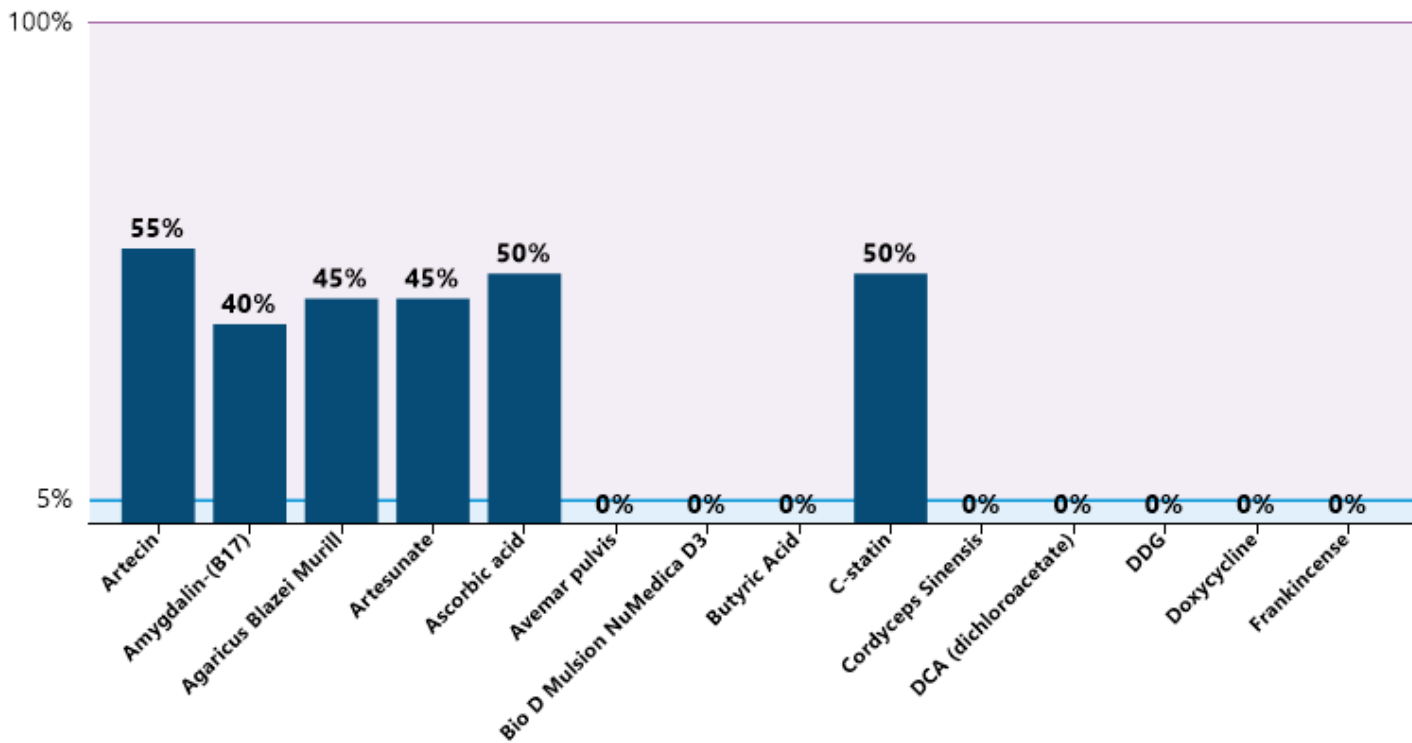
PK Inhibitors

Angiostop, Apigenin, Curcumin
(turmeric), Genistein, Indol 3 Carbinol,
Paw-Paw, Pure Quercetin, Quercetin,
VascuStatin

* Disclaimer! The natural substances that are tested in our lab facilities are not bonded from restriction for medical use.

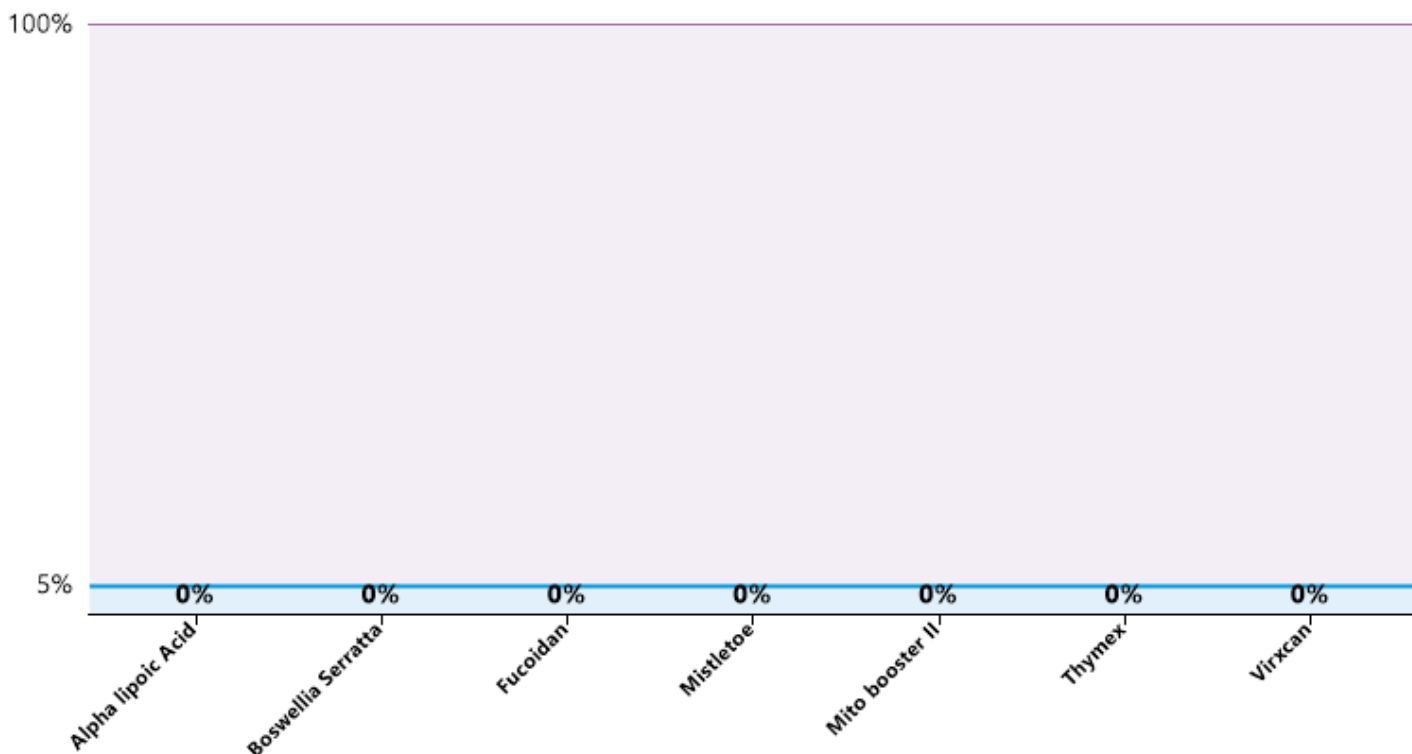
— No sensitivity — Sensitivity

Class I (Cytotoxic Agents)

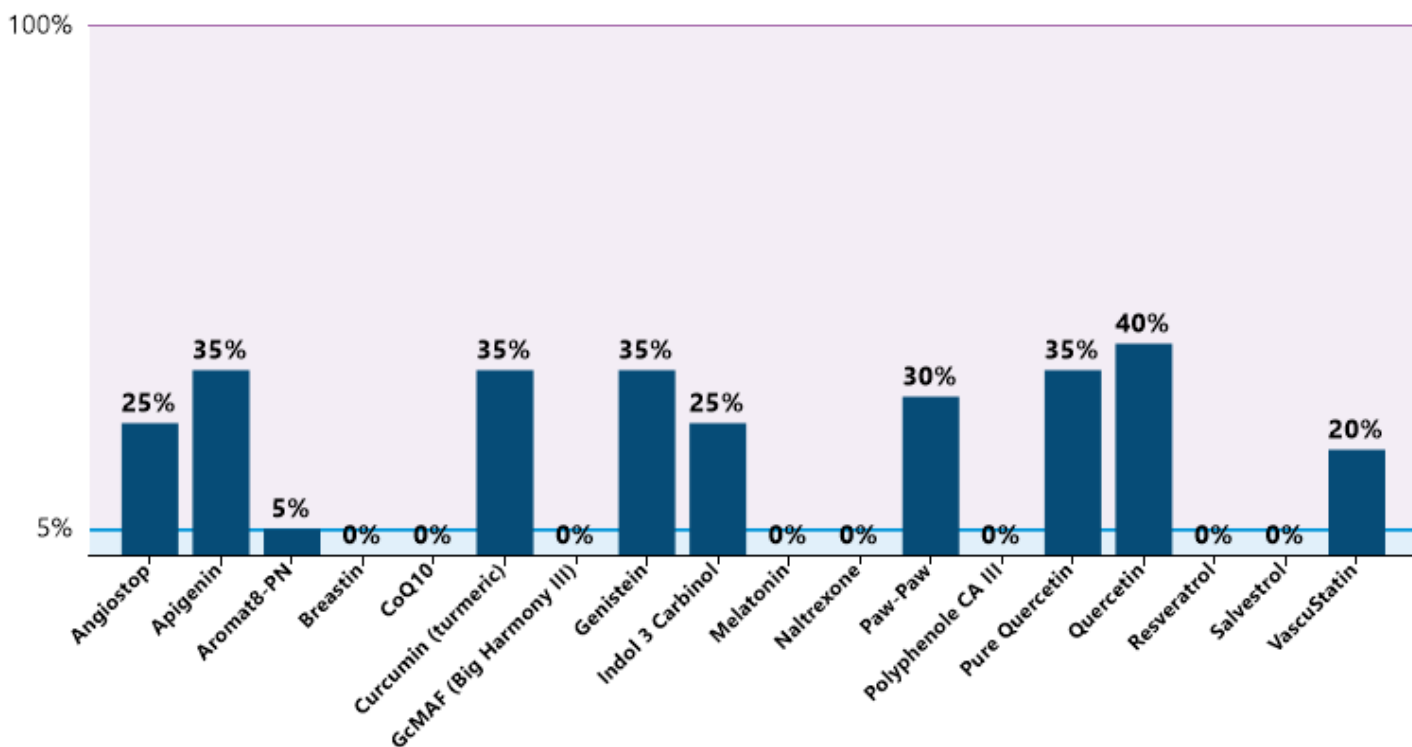


— No sensitivity — Sensitivity

Class II (Immunostimulants / Immunomodulators)



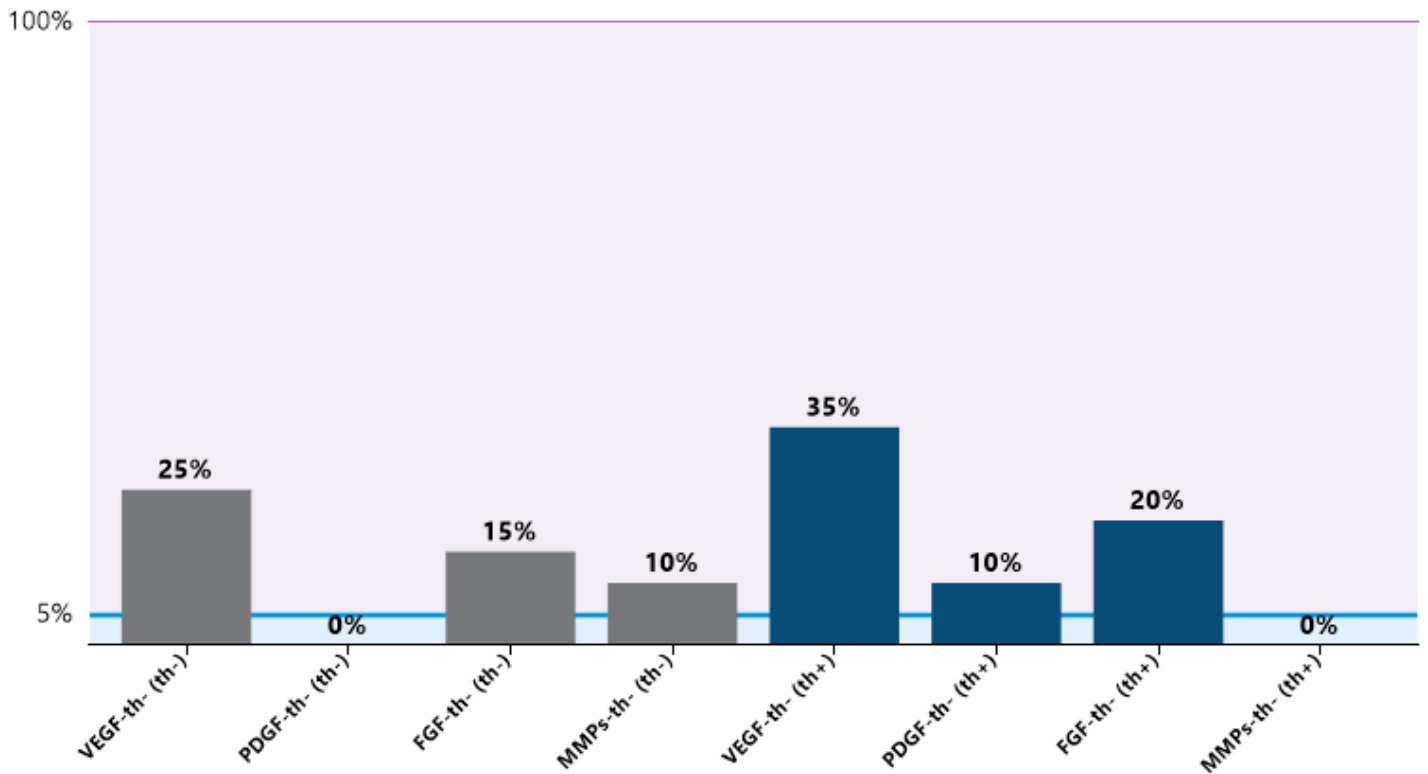
Class III (PK Inhibitors)



No sensitivity Sensitivity

Malignant Cells - Thalidomide

th- th+



NATURAL SUBSTANCES

SUBSTANCE NAME	VALUE W/O SUBSTANCE	VALUE WITH SUBSTANCE	EFFICACY
Berberine	10	14	Not Effective
Mangosteen	10	17	Effective
Cordyceps	10	15	Not Effective
Graviola	10	14	Not Effective
Honopure 50mg/kg l	11	17	Effective
Teavigo	12	18	Effective
test	10	20	Effective
Graviola	20	10	Not Effective

Information

Laboratory Process

- Isolation of malignant cells using Oncoquick with a membrane that isolates malignant cells from normal cells
- Centrifugation at 350g for 10 min and we collected the supernatant with the malignant cells
- Isolation of malignant cells from mononuclear cells by negative selection
- Developed 46 cell cultures in a fetal calf serum media. In each culture of the well plate we added a biological modifier substance Class I - cytotoxic Agents, Class II - Immunostimulants / immunomodulators & Class III - PK inhibitors (details in the graphics below) that is used in clinical application
- Then we developed those cultures and we harvested a sample every 24 hours and made the following assays
- In the culture that contains all the substances we measure the apoptotic ability using the oncogen apoptosis kit
- In the culture that contains the ukrain we measure the inhibition of tyrosine kinase catalytic ability from the growth factor receptors (EGF-r, IGF-r) and the production of cytokines PMBC
- In the culture that contains quercetin we measure the inhibition of EGF and IGF
- In the culture that contains indol-3-carbinol we measure the inhibition of VEGF and FGF and PDGF
- In the culture that contains the mistletoe we measure the inhibition of tyrosine kinase catalytic ability from the growth factor receptors (EGF-r, IGF-r) and the production of cytokines and the increase of PMBC
- In the culture that contains the ascorbic acid we measure the catalytic activity of GSH and GSSG (redox reaction) and the induction of cytochrome C (apoptosis)
- In the culture that contains the PolyMVA we measure the catalytic activity of GSH and GSSG (redox reaction) and the induction of cytochrome C (apoptosis)
- In the culture that contains the super artemisinin we measure the catalytic activity of GSH and GSSG (redox reaction for free radical since super artemisinin binds free radicals with the iron molecule), the inhibition of VEGF, FGF and PDGF (since it acts to the angiogenesis cascade reactions) and the induction of cytochrome C (apoptosis)

This Test report is issued based on testing the sample / specimen examined by the Laboratory. Modification of data, selective breeding and using portions of this test report is forbidden. The laboratory assumes no liability for improper use or improper interpretation of the results.

Sincerely,

Dr. Ioannis Papatiriu MD, PhD, SCym

- a. Hashem S, Ali TA, Akhtar S, Nisar S, Sageena G, Ali S, Al-Mannai S, Therachiyil L, Mir R, Elfaki I, Mir MM, Jamal F, Masoodi T, Uddin S, Singh M, Haris M, Macha M, Bhat AA. Targeting cancer signaling pathways by natural products: Exploring promising anti-cancer agents. *Biomed Pharmacother.* 2022 Jun;150:113054. doi: 10.1016/j.biopha.2022.113054. Epub 2022 Apr 30. PMID: 35658225.
- b. Nuzzo G, Senese G, Gallo C, Albiani F, Romano L, d'Ippolito G, Manzo E, Fontana A. Antitumor Potential of Immunomodulatory Natural Products. *Mar Drugs.* 2022 Jun 8;20(6):386. doi: 10.3390/md20060386. PMID: 35736189; PMCID: PMC9229642.
- c. Toloudi M, Apostolou P, Chatziioannou M, Papisotiriou I. Correlation between Cancer Stem Cells and Circulating Tumor Cells and Their Value. *Case Rep Oncol.* 2011 Jan 29;4(1):44-54. doi: 10.1159/000324403. PMID: 21526006; PMCID: PMC3082489.
- d. Dong S, Guo X, Han F, He Z, Wang Y. Emerging role of natural products in cancer immunotherapy. *Acta Pharm Sin B.* 2022 Mar;12(3):1163-1185. doi: 10.1016/j.apsb.2021.08.020. Epub 2021 Aug 21. PMID: 35530162; PMCID: PMC9069318.
- e. Ling T, Lang WH, Maier J, Quintana Centurion M, Rivas F. Cytostatic and Cytotoxic Natural Products against Cancer Cell Models. *Molecules.* 2019 May 26;24(10):2012. doi: 10.3390/molecules24102012. PMID: 31130671; PMCID: PMC6571673.
- f. Toloudi M, Ioannou E, Chatziioannou M, Apostolou P, Kiritsis C, Manta S, Komiotis D, Papisotiriou I. Comparison of the growth curves of cancer cells and cancer stem cells. *Curr Stem Cell Res Ther.* 2014 Mar;9(2):112-6. doi: 10.2174/1574888x0902140121163539. PMID: 24359142.
- g. Gairola K, Gururani S, Bahuguna A, Garia V, Pujari R, Dubey SK. Natural products targeting cancer stem cells: Implications for cancer chemoprevention and therapeutics. *J Food Biochem.* 2021 Jul;45(7):e13772. doi: 10.1111/jfbc.13772. Epub 2021 May 24. PMID: 34028051.